

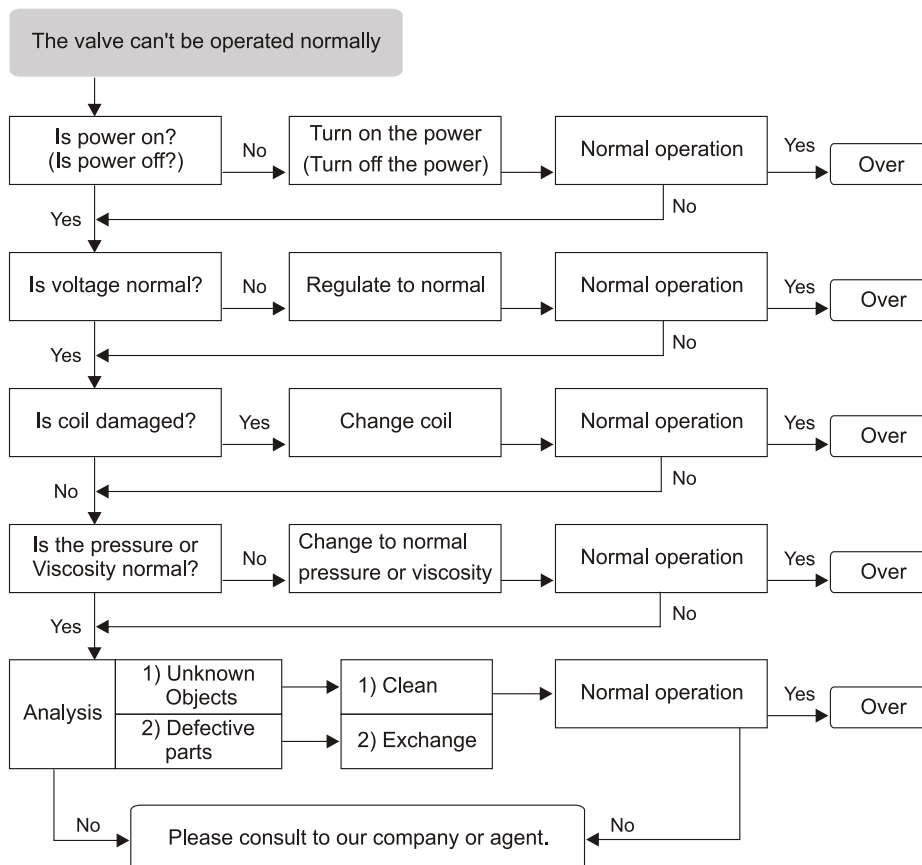
2/2 WAY SOLENOID VALVE

⚠ Precaution before using

- (A) Please check the specification carefully, also note 1) voltage 2) operation pressure 3) temperature 4) material items 5) flow rate 6) viscosity must be in accordance with it.
- (B) Please clean impurities in pipes before installation, also note tape seal or glue seal can't be over the first screw.
- (C) Please install precision strainer in front of valve, also set bypass in convenience of maintenance.
- (D) If the difference at peak and off hours voltage is over $\pm 10\%$, please set constant voltage regulator.
- (E) The medium is liquefied by heat, solidified or gelled by cool, please do not use the valve. Please clean the mineral substance such as magnesium, calcium.. etc, which was stuck at the valve body before using.
- (F) If the outlet of pipe is rapidly curved, shrunk or blocked up which causes swirl, block current and back pressure, the condition is not suitable for the valve. Please test it or choosing the small type of pressure resistant valve.
- (G) The power is on for over two hours, please change low power consumption and low temperature rising coil. You can choose a bigger size of coil if the operation pressure of the above mentioned coils doesn't meet your request.
- (H) The valve will be closed immediately while power is off or working with high pressure or a bigger size valve will create hammer effect, please install hammer absorber in front of the valve.
- ※) If the above mentioned conditions can't be solved, please do not place order to avoid the confusion of returning goods.
- ※) Our office will offer one year's guarantee in normal condition. If there are quality problems, the free charge maintenance and replacement will be served immediately.
- ※) Natural Disaster, Man-Made Factors and the above mentioned conditions are not within our guaranty range. The maintenance with the above factors will be charged at reasonable cost.

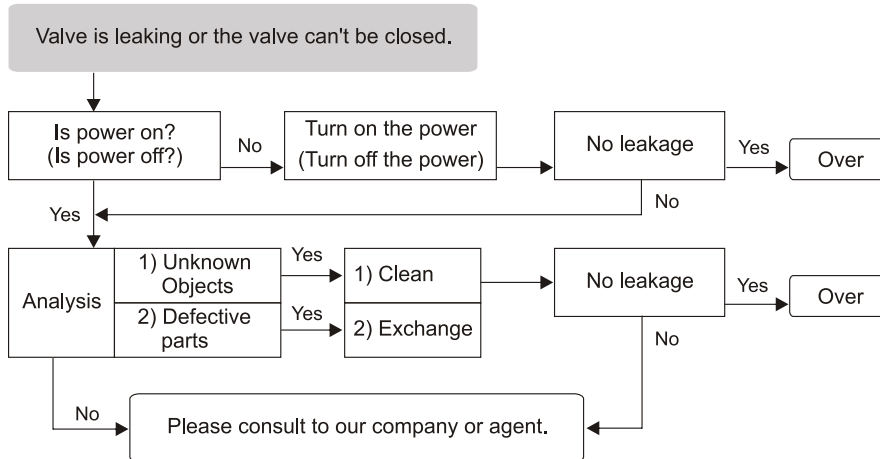
⚠ Troubleshooting after using

(A) The valve can't be operated normally.



⚠ **Troubleshooting after using**

(B) Valve is leaking or the valve can't be closed.



(C) Vibration or noise at valve body

